

CHUNKY GUERNSEY SCARF

EP70



ESTELLE

ESTELLEYARNS.COM



CHUNKY GUERNSEY SCARF

EP70

A quick and fun knit, this scarf uses a simple cable and easy to memorize textures to create a classic look that will always be in style. It would also look great in any of our solid colour chunky yarns!

DESIGNED BY: Robbie Laughlin

P2Tog - Insert the right needle into the next 2 sts purlwise, and purl them together.

SKILL LEVEL: Beginner

St(s) - Stitch(es)

FINISHED MEASUREMENTS

203cm (80") long x 19cm (7.5") wide, without fringe

INSTRUCTIONS

If you prefer to work from charts, please refer to pages 2-3.

MATERIALS

- 3 Skeins of Estelle Llama Natural Chunky
- 6.5mm (US105) Straight or circular needles
- Cable Needle
- Darning Needle

Using Long-Tail method, cast on 30 sts.

GAUGE

14 sts = 4" in stockinette st

FIRST BORDER SECTION

R1 (RS): K2, (P1, K1) 9 times, P2, K1, M1R, K2, M1L, K1, P2, K2. (32 sts)

R2 (WS): K1, P1, K2, P6, K2, (P1, K1) to end of row.

R3: K2, (P1, K1) 9 times, P2, K2, C4F, P2, K2.

R4: K1, P1, K2, P6, K2, (P1, K1) to end of row.

R5: K2, (P1, K1) 9 times, P2, C4B, K2, P2, K2.

R6: K1, P1, K2, P6, K2, (P1, K1) to end of row.

R7-10: Repeat R3-R6.

ABBREVIATIONS

K - Knit

P - Purl

C4B - Cable 4 Back; Slip 2 sts to cable needle, and hold in back; Knit 2 sts from left needle, knit 2 sts from cable needle.

C4F - Cable 4 Front; Slip 2 sts to cable needle, and hold in front; Knit 2 sts from left needle, knit 2 sts from cable needle.

M1R - Make One Right; Insert the left-hand needle, from back to front, under the strand of yarn which runs between the stitch just worked and the next stitch on the left-hand needle, knit this stitch through the front loop.

M1L - Make One Left; Insert the left-hand needle, from front to back, under the strand of yarn which runs between the stitch just worked and the next stitch on the left-hand needle, knit this stitch through the back loop.

MAIN BODY SECTION

R1 (RS): K2, P1, K17, P2, K2, C4F, P2, K2.

R2 (WS): K1, P1, K2, P6, K2, P17, K1, P1, K1.

R3: K2, P1, (K2, P2) 4 times, K1, P2, C4B, K2, P2, K2.

R4: K1, P1, K2, P6, K2, P1, (K2, P2) 4 times, K1, P1, K1.

R5: K2, P1, K17, P2, K2, C4F, P2, K2.

R6: K1, P1, K2, P6, K2, P17, K1, P1, K1.

R7: K2, P1, (K2, P2) 4 times, K1, P2, C4B, K2, P2, K2.

R8: K1, P1, K2, P6, K2, P1, (K2, P2) 4 times, K1, P1, K1.

R9: K2, P1, K17, P2, K2, C4F, P2, K2.

R10: K1, P1, K2, P6, K2, P17, K1, P1, K1.

R11: K2, P1, K1, P15, K1, P2, C4B, K2, P2, K2.

CHUNKY GUERNSEY SCARF

R12: K1, P1, K2, P6, K2, P17, K1, P1, K1.

R13: K2, P1, K2, P1, (K1, P1) 6 times, K2, P2, K2, C4F, P2, K2.

R14: K1, P1, K2, P6, K2, (P1, K1) to end of row.

R15: K2, P1, K2, P1, (K1, P1) 6 times, K2, P2, C4B, K2, P2, K2.

R16: K1, P1, K2, P6, K2, (P1, K1) to end of row.

R17: K2, P1, K17, P2, K2, C4F, P2, K2.

R18: K1, P1, K2, P6, K2, P1, K15, P1, K1, P1, K1.

R19: K2, P1, K17, P2, C4B, K2, P2, K2.

R20: K1, P1, K2, P6, K2, P2, (K1, P5) 2 times, K1, P2, K1, P1, K1.

R21: K2, P1, K1, P1, K1, (P1, K3, P1, K1) 2 times, P1, K1, P2, K2, C4F, P2, K2.

R22: K1, P1, K2, P6, K2, P2, (K1, P5) 2 times, K1, P2, K1, P1, K1.

R23: K2, P1, K17, P2, C4B, K2, P2, K2.

R24: K1, P1, K2, P6, K2, P1, K15, P1, K1, P1, K1.

Repeat Main Body Section a total of 13 times.

Repeat R1-R10 once more.

FINAL BORDER SECTION

R1 (RS): K2, (P1, K1) 9 times, P2, K2, C4F, P2, K2.

R2 (WS): K1, P1, K2, P6, K2, (P1, K1) to end of row.

R3: K2, (P1, K1) 9 times, P2, C4B, K2, P2, K2.

R4: K1, P1, K2, P6, K2, (P1, K1) to end of row.

R5-R8: Repeat R1-R4.

R9: K2, (P1, K1) 9 times, P2, K2, C4F, P2, K2.

R10: K1, P1, K2, P1, P2Tog, P2, P2Tog, P1, K2, (P1, K1) to end of row. (30 sts)

Bind off loosely knit wise, with right side facing.

Block to finished dimensions.

Cut a total of 34 pieces of 12" long yarn, and attach to every other stitch, and all sts of cable at both ends of scarf.

TO WORK FROM CHART:

Using Long-Tail method, cast on 30 sts.

Work Rows 1-10 of chart.

Work Rows 11-34 of chart, a total of 13 times.

Work Rows 11-20 of chart once more.

Work Rows 35-44 of chart once.

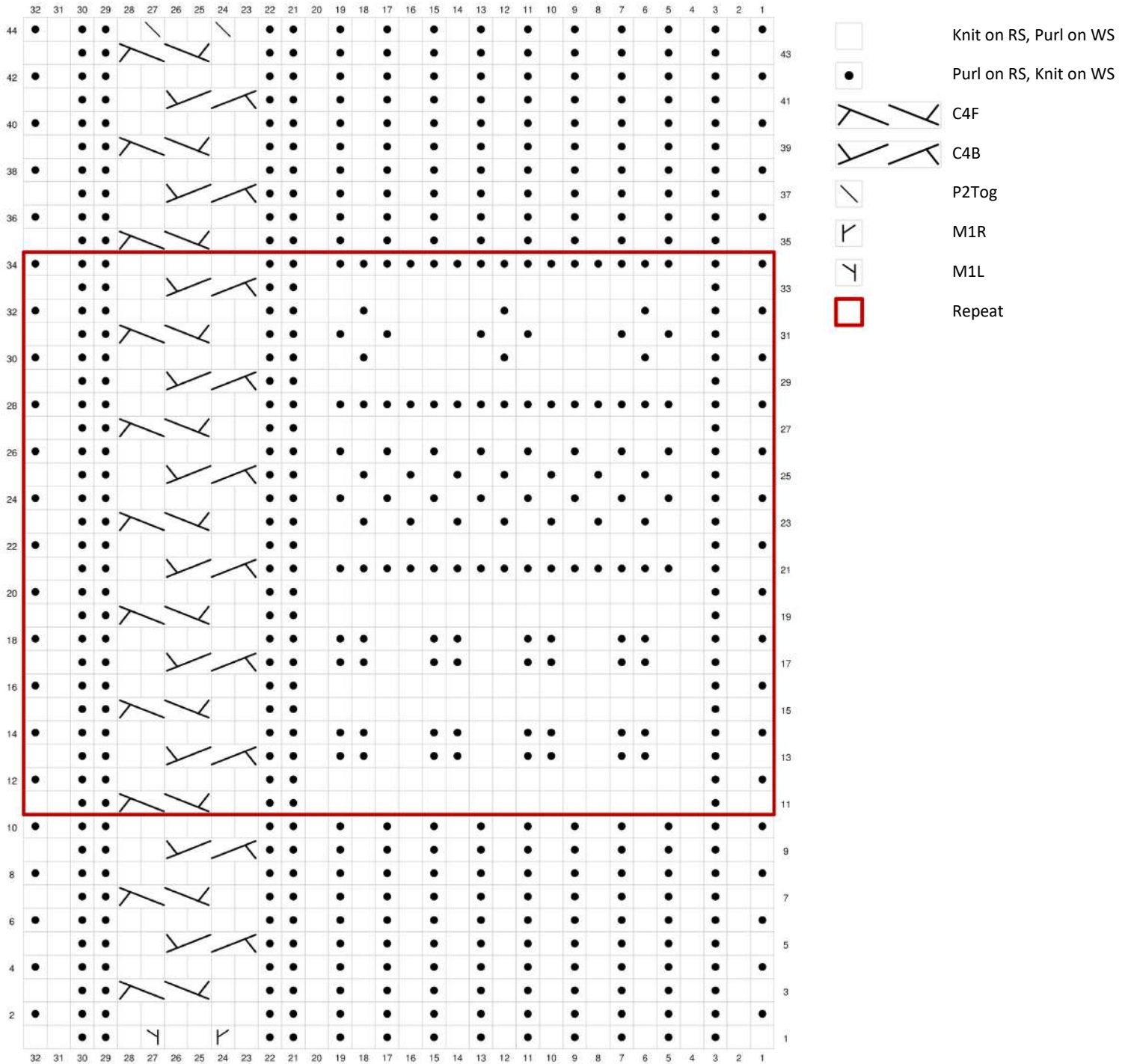
Bind off loosely knit wise, with right side facing.

Block to finished dimensions.

Cut a total of 34 pieces of 12" long yarn, and attach to every other stitch, and all sts of cable at both ends of scarf.



CHUNKY GUERNSEY SCARF



This is a free pattern. For more free patterns visit www.estelleyarns.com

Every effort has been made to ensure the accuracy of this pattern, however we cannot be responsible for variance of individual knitters, human, or typographical errors.

©Estelle Designs and Sales Ltd. 2017 - CA10534

